



*Bulkhead Fitting Not Included

TANK TITE™

CCP Series Tank-Tite™ *

1/2" TO 3" PVC

The Tank-Tite is a revolutionary patented compression ring that eliminates the need to retighten gasketed bulkhead fittings! The Tank-Tite provides a constant load on the gasket of the bulkhead fitting to overcome, and compensate for, tank wall expansion/contraction in thickness due to changes in temperature and/or pressure within the tank. The Tank-Tite also imparts at the same time a constant load on the bulkhead fitting nut that reduces the possibility of loosening of the nut due to vibration within the system.

KEY FEATURES

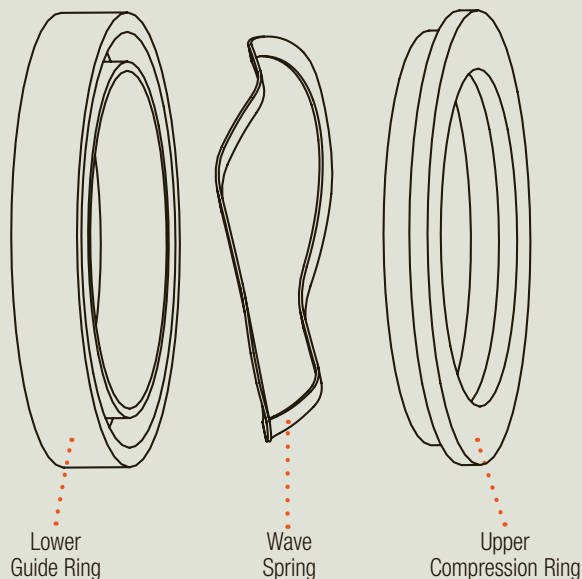
- Robust PVC Upper and Lower Body Construction
- 17.4 PH Stainless Steel Wave Spring
- Rated to 150 PSI
- Fits with Hayward® BFAS/BFA Series Bulkhead Fittings
- Can be Used with All Bulkhead Fitting Materials

MATERIALS

- PVC Cell Class 12454 per ASTM D1784
- 17.4 PH Stainless Steel

TECHNICAL INFORMATION

EXPLODED VIEW



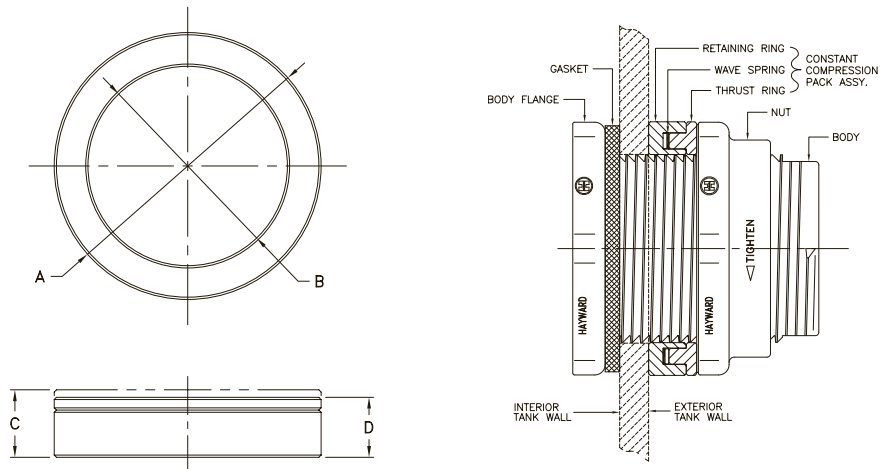
SELECTION CHART

SIZE	MATERIAL	SPRING	PRESSURE RATING
1/2" – 3" (DN15 – DN80)	PVC	17.4 PH SSTL	150 PSI @ 70°F Non-Shock

CCP Series Tank-Tite™

1/2" TO 3" PVC

TECHNICAL INFORMATION, CONTINUED

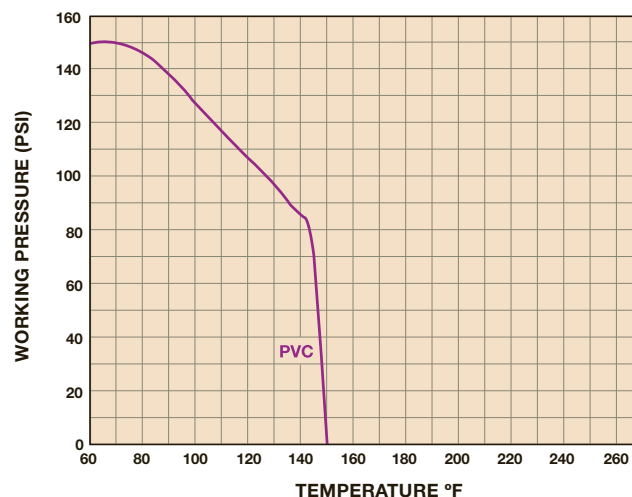


DIMENSIONS

SIZE in/DN	A in/mm	B in/mm	C in/mm FREE HEIGHT	D in/mm WORKING HEIGHT
1/2/15	2.40/61	1.40/36	.80/20	.69/18
3/4/20	2.40/61	1.65/42	.80/20	.69/18
1/25	2.72/69	1.90/48	.84/21	.72/18
1-1/4/32	3.56/90	2.66/68	.90/23	.80/20
1-1/2/40	3.56/90	2.66/68	.90/23	.80/20
2/50	4.38/111	3.25/82	.93/24	.83/21
3/80	6.12/155	4.52/115	1.07/27	.91/23

Dimensions are subject to change without notice – consult factory for installation information

OPERATING TEMPERATURE/PRESSURE



COMMERCIAL
INDUSTRIAL SUPPLY

For pricing and information please call
Commercial Filtration Supply at (866) 777-8001

Visit us Online at: www.commercial-industrial-supply.com for
more high quality process equipment.