



## EAU Series Electric Actuators

**Request a Quote Today!**



### Overview

Moderately-priced uni-directional quarter-turn actuator for Hayward ball valve applications only. In addition to providing ample torque for 1/2" – 2" valve operation, this all plastic actuator offers a molded-in mounting bracket as well as several basic features.

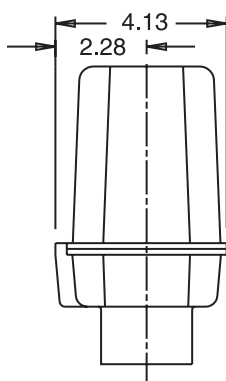
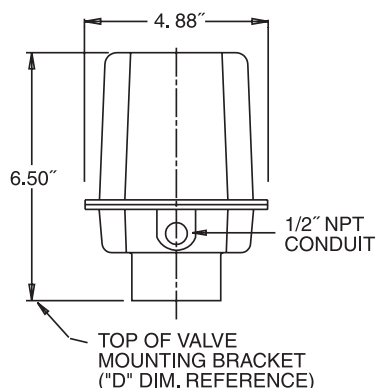
### Features

- Plastic Weather Resistant Enclosure
- 90° (EAU29) or 180° (EAU28) Operation
- UL/CSA Listed Motor
- Permanently Lubricated
- Brake Standard
- On/Off Applications
- Nema 4/4X Housing
- 115 VAC Operation
- Auxiliary Limit Switch Standard

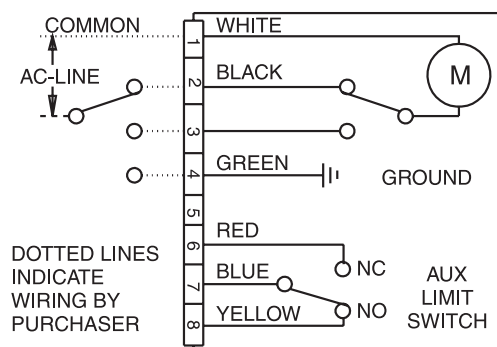
### Options

- Voltage Options: 12 VDC, 24 VDC, 12 VAC, 24 VAC, 220 VAC Motors

### Dimensions-Inches



### Wiring Diagram



### Actuator Specifications

Model	EAU
Torque Output (in-lbs)	140
Standard Voltage	115 VAC
Duty Cycle	25%
Thermal Overload	Standard
Cycle Time (secs)*	2.5/5.0
Auxiliary Switch Limit Rating	SPDT 5A Resistive @ 230 VAC
Conduit Entry	1/2" NPT
Enclosure	NEMA 4/4X
Enclosure Material	Polypropylene
Max Current Amps @ 115 VAC	2.8
Weight (lb/kg)	6.2 / 2.7

\* EAU29 2.5, EAU28, 5.0

### Valve Selection Chart

Size	True Union Ball Valve	Three-Way Ball Valve
1/2" - 2"	EAU29 (90°)	EAU28 (180°)

\* Actuator size selections based on clean water at 70°F.

**COMMERCIAL**  
INDUSTRIAL SUPPLY

For pricing and information please call  
Commercial Filtration Supply at **(866) 777-8001**

Visit us Online at: [www.commercial-industrial-supply.com](http://www.commercial-industrial-supply.com) for  
more high quality process equipment.