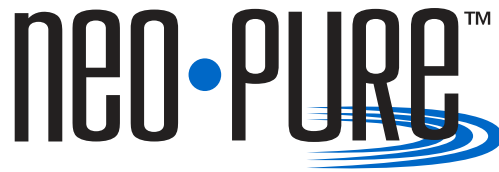


J Series

Jumbo Filter Housings



Applications

- Potable Drinking Water
- Industrial Waste Water Treatment
- Process Water
- Reverse Osmosis Prefiltration
- Cooling Tower Filtration
- Desalination Prefiltration
- Food and Beverage
- Oil / Gas
- Paints / Inks / Coatings
- Paper and Pulp



USA MADE

*Residential / Commercial / Industrial
Filtration Applications*

Standard Features

- Manufactured in USA
- Accepts single jumbo cartridge for easy installation and replacement
- Heavy-duty 304L or 316L stainless steel construction for maximum durability and corrosion resistance
- V-band clamp or swing bolt closures for quick and easy cartridge change-outs and secure sealing
- Available in three sizes to support flow rates up to 150 GPM
- Standard with pressure gauges, mounting legs, female national pipe thread and grounding lug
- Extensive choice of cartridge micron ratings – 0.35, 1, 5, 10, 20, 50 and 100

Specifications, Operating Parameters and Options

Maximum Operating Pressure

150 psig (10.3 bar) @ 300°F (149°C)

Connections

Inlet/Outlet: Standard – 2" FNPT

Optional: MNPT or BSP fittings; RF flanges,
Sanitary ferrules or grooved fittings

Drain Ports: 1/2" NPT

Vent Ports: 1/4" NPT

Materials of Construction

Head/Shell/Connections: 304L or 316L stainless steel

Closure: Clamp – 304L stainless steel

Swing bolts – zinc plated steel

Vent and Drain Plugs: 304L or 316L stainless steel

Gaskets

Standard: Buna N (FDA grade)

Optional: EPR, silicone, Teflon encapsulated silicone, Viton

Finish

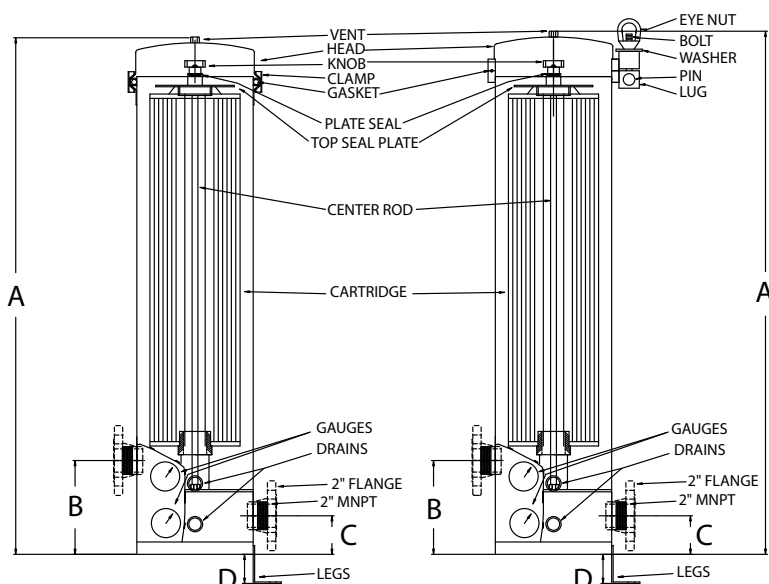
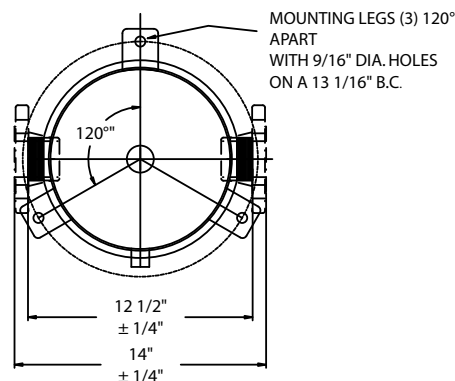
Poly-coat on exterior surfaces

Optional: Electropolish, glass bead, passivate, or
3M™ Coating

MODEL	MAXIMUM FLOW GPM (LPM)	MAXIMUM DIAMETER CARTRIDGE	CLAMP STYLE (BCJ)	SWING BOLT STYLE (SBJ)			
			A	A	C	C	D
BCJ40 / SBJ40*	50 (185.5)	7-3/4"	27" (68.6 cm)	27-1/2" (69.9 cm)	8-1/16" (20.5 cm)	3-3/16" (8.4 cm)	2-1/2" (6.4 cm)
BCJ90 / SBJ90	100 (371.10)	7-3/4"	37" (94.0 cm)	37-1/2" (85.3 cm)	8-1/16" (20.5 cm)	3-3/16" (8.4 cm)	2-1/2" (6.4 cm)
BCJ170/SBJ170	150 (594.3)	7-3/4"	47" (119.4 cm)	47-1/2" (120.7 cm)	8-1/16" (20.5 cm)	3-3/16" (8.4 cm)	2-1/2" (6.4 cm)

* BCJ = V Band Clamp Housing SBJ = Swing Bolt Housing

Dimensions

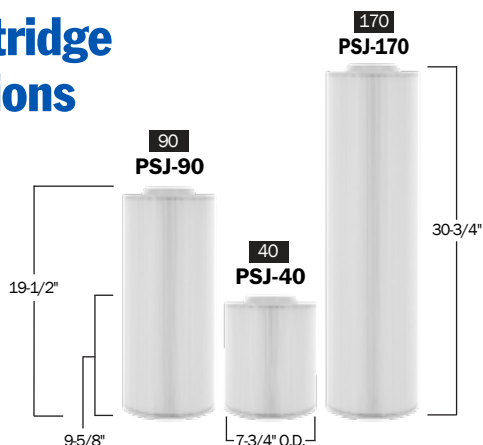


Ordering Guide (Example: BCJ170-316L-2MT-HD-E)

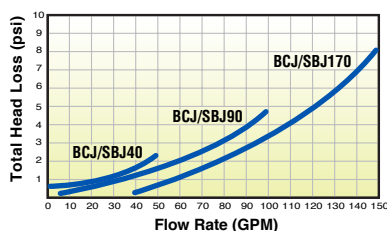
BCJ		170		– 316L –		2		MT		–		HD		–		E	
MODEL	CARTRIDGE SERIES	MATERIAL	CONNECTION SIZE	CONNECTION TYPE					OPTIONS						GASKET		
BCJ = V-Band Clamp SBJ = Swing Bolt	40 = 40 Series 90 = 90 Series 170 = 170 Series	304L (standard) 316L 304LC* 316LC* 304LEP** 316LEP**	2" (standard) 1" 1.5"	FT = BP = FL = GF = MT = TC =	FNPT (standard)† BSP Flange Grooved MNPT Ferrules			Blank = P =		Legs, Gauge Ports, Pressure Gauges (standard) Passivate			Blank = E = S = V = TS =		Buna N (standard) EPR Silicone Viton Teflon		

* LC = 3M™ Coated **LEP = Electropolish † MNPT fittings are available in 1.5 and 2 inches.

Cartridge Options



Pressure Drop



Above: Pressure drop is for filter housing and 20 micron filter cartridge in clean water.



Filter Cartridges Selection Guide
CLICK HERE

NeoLogic
SOLUTIONS
Filtration Division

Contact your **Authorized NeoLogic Distributor** today:
Commercial Industrial Supply
1444 East Main St., Rock Hill, SC 29730 USA
Tel: (866) 777-8001 Email: info@emailcis.com

We ship 5 days
a week!

FedEx