

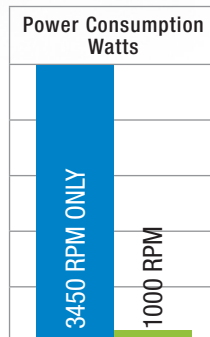
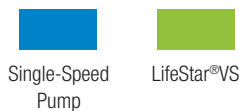
NEW PRODUCT PREVIEW

A-Series LifeStar®VS Aquatic Pump

VARIABLE SPEED 600 - 3450 RPM,
2 HP, SINGLE PHASE 230V, TEFC



Low energy consumption
= cost-savings!



The new A-Series LifeStar®VS pump from Hayward Flow Control is a self-priming, energy efficient and fully rated variable speed premium pump with an innovative multi-position digital control interface that provides high flow rates and reduced energy consumption for operation in aquatic and animal life support systems. The pump is fully programmable with a self-contained 24-hour clock and up to 8 custom speed and timer functions. For enhanced management, it can be controlled by third party control platforms. Its specialized construction with 316 SS wetted hardware and silicone carbide shaft seal, makes it safe for even the most sensitive aquatic habitats.

The integral, no-rib basket traps debris and prevents solids from damaging pump or downstream components. The clear trap cover incorporates 1/4 turn sealing for fast and efficient maintenance in tight quarters.

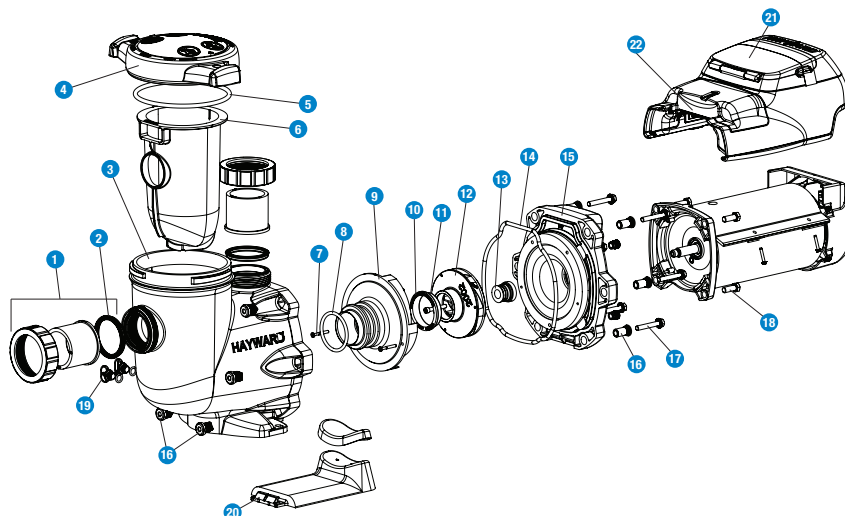
KEY FEATURES AND BENEFITS

- Ideal for Sensitive Aquatic Environments or Salt Water Systems
- Multi-Position or Detachable / Wall Mount Digital Control Interface with Password Protection
- All Wetted Hardware Manufactured from 316 Stainless Steel
- Silicon Carbide/Silicon Carbide Shaft Seal Suitable for Fresh and Salt Water Use
- Corrosion Resistant Housing
- Self-Priming Pump
- Suitable For High Volume Pumping
- Clear High Capacity Basket Strainer Lid for Visual Inspection
- Elevated Base Ensures Better Ventilation and Protection from Flooding
- Perforated HDPE Basket

TYPICAL APPLICATIONS

- Aquatic and Animal Life Support
- Aquaculture
- Research and Science
- Salt Water Systems

EXPLODED VIEW



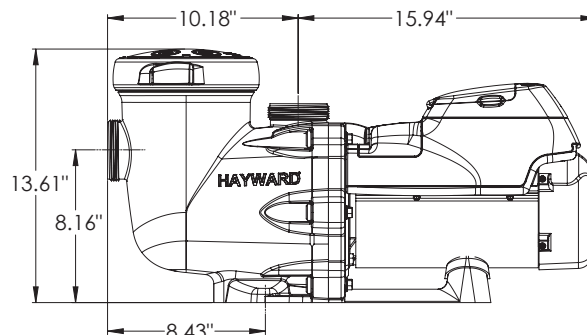
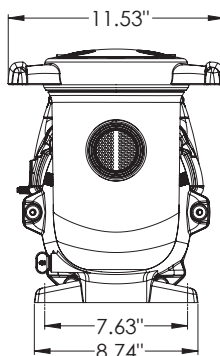
A-Series LifeStar® VS Aquatic Pump

VARIABLE SPEED 600 - 3450 RPM, 2 HP, SINGLE PHASE 230V, TEFC

PARTS LIST

- | | |
|--|--|
| 1. True Union Connection and Nut with O-Ring | 12. Impellers with Impeller Screws |
| 2. Union Gasket | 13. Shaft Seal Assembly |
| 3. Pump Strainer Housing | 14. Housing O-Ring |
| 4. Strainer Cover | 15. Seal Plate |
| 5. Strainer Cover O-Ring | 16. Housing Insert/Seal Plate Spacer |
| 6. Strainer Basket | 17. Housing Bolt |
| 7. Diffuser Screw | 18. Motor Bolt |
| 8. Diffuser O-Ring | 19. Drain Plug with O-Ring |
| 9. Diffuser | 20. Bracket, Motor Support |
| 10. Impeller Screw | 21. Motor Drive Display Cover |
| 11. Impeller Ring | 22. Digital Control Interface Assembly |

DIAGRAM



AVAILABLE SPARE PARTS

- | | |
|---------------------------|---------------|
| 1. True Union Connections | 3. Shaft Seal |
| 2. Hardware | 4. Impellers |

Dimensions are subject to change without notice - consult factory for installation information.

SPECIFICATIONS

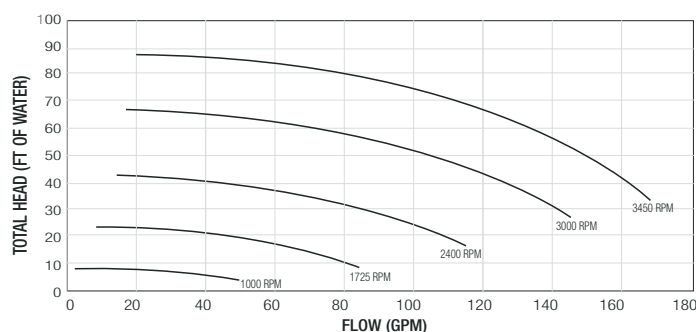
PART	SPECIFICATION
Housing	Glass Filled Polypropylene
Connections	2" True Union Socket
Motor Shaft	303 SS (Non-Wetted)
Shaft Face Seal	Silicon Carbide/Silicon Carbide
Shaft Secondary Seal	EPDM
All Wetted Hardware	316 SS (Impeller Insert, Impeller Screw and 2 Diffuser Screws)
Main Housing Gasket	EPDM
Motor Bolts	316 SS
Housing Bolts	316 SS
Motor	Single Phase - Totally Enclosed Fan Cooled (TEFC)
HP Rating	2
Strainer Basket	HDPE, 1/8" Perf
Service Factor	1.35
Voltage Supply	230V, 60 Hz

SAMPLE SPECIFICATION

All centrifugal, life-support variable speed pumps (2 hp) shall have glass filled polypropylene bodies conforming to ASTM D4101, Cell Classification 85580. All seals and O-rings shall be EPDM. The primary pump mechanical-seal must be silicon carbide/silicon carbide. The pump must have a multi-position/detachable password protected digital control interface, and must contain an integral basket strainer and a clear lid that is visual during basket inspection. All wetted hardware must be 316 stainless steel only. Inlet and outlet port connections shall be true-union to allow quick installation and/or pump removal. Pump shall be self-priming to avoid cavitation. Motors to be Single Phase TEFC.

Pumps shall be LifeStar-series manufactured by Hayward Flow Control products. Pumps shall carry a 2-year warranty.

PUMP PERFORMANCE CURVE



DIGITAL CONTROL INTERFACE



Option 1: Four-position rotation on the pump for a more convenient view.

Option 2: Detachable for wall-mounting (mounting kit and communication cable included.)

NPP1114A

COMMERCIAL
INDUSTRIAL SUPPLY

For pricing and information please call
Commercial Filtration Supply at (866) 777-8001

Visit us Online at: www.commercial-industrial-supply.com for
more high quality process equipment.