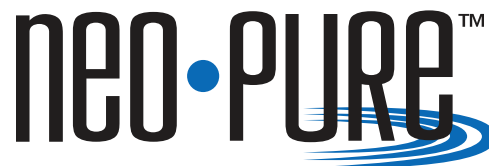


Multi-Cartridge Filter Housings

12 and 22 Round Series



Applications

- Chemicals
- Cooling Tower Filtration
- Desalination Prefiltration
- Electronics
- Food and Beverage
- Oil / Gas
- Paints / Inks / Coatings
- Paper and Pulp
- Power
- Water



Commercial/Industrial Filtration Applications

Standard Features

- Manufactured in the USA
- Holds 30" or 40" lengths for optimal choice of flow rates
- Heavy-duty 304L or 316L stainless steel construction for maximum durability and corrosion resistance
- V-band clamp or swing bolt closures for quick and easy cartridge change-outs and secure sealing
- Top spring seals allow for variable length cartridges
- Universal seal cups and compression plates accept DOE and 222/FLAT or FIN cartridges – standard on all filter housings
- 1/4" gauge port on body – standard on all filter housings

Product Specifications

Maximum Operating Pressure

150 psig (10.3 bar) @ 300°F (149°C)

Connections

Inlet/Outlet: 3" (12 round) and 4" (22 round) RF Flanges

Optional: RF flanges, sanitary ferrules, MNPT, FNPT, BSP or grooved fittings

Drain Ports: 1/2" FNPT

Vent Ports: 1/4" FNPT (12 round), 1/2" FNPT (22 round)

Materials of Construction

Head/Shell/Connections: 304L or 316L stainless steel

Closure: Clamp – 304L stainless steel

Swing bolts – zinc plated steel

Vent and Drain Plugs: 304L or 316L stainless steel

Mounting Legs: 304L stainless steel

Gaskets

Standard: Buna N (FDA grade)

Optional: EPR, silicone, Teflon encapsulated silicone, Viton

Finish

Poly-coat on exterior surfaces

Optional: 3M™ coating, electropolish, glass bead or passivate

Cartridge Type

DOE style cartridges (maximum 2-3/4" diameter for 12 round and 2-5/8" diameter for 22 round series) OR

222/FLAT or FIN cartridges – standard on all filter housings

22 round series holds 21 cartridges, order as 21 round housing

Custom Options

Available in ASME "U" Code specifications, or built to ASME code with no stamp, for commercial and industrial filtration

MODEL	QUANTITY (LENGTH) OF CARTRIDGES +	RATED FLOW CAPACITY* GPM (LPM)	INLET/OUTLET (PIPE SIZE)	MAXIMUM DIAMETER CARTRIDGE	CLAMP STYLE	SWING BOLT STYLE				
					A	A	B	C	D	E
BCM12X2/SBM12X2	12 (20")	168 (636)	3"	2-3/4"	39-1/2" (100.3 cm)	40-1/2" (102.9 cm)	15-3/8" (39.1 cm)	10" (25.4 cm)	16-11/16" (42.5 cm)	8" (20.3 cm)
BCM12X3/SBM12X3	12 (30")	252 (954)	3"	2-3/4"	49-1/2" (125.7 cm)	50-1/2" (128.3 cm)	15-3/8" (39.1 cm)	10" (25.4 cm)	16-11/16" (42.5 cm)	8" (20.3 cm)
BCM12X4/SBM12X4	12 (40")	330 (1272)	3"	2-3/4"	59-1/2" (151.1 cm)	60-1/2" (153.7 cm)	15-3/8" (39.1 cm)	10" (25.4 cm)	16-11/16" (42.5 cm)	8" (20.3 cm)
BCM22X3/SBM22X3**	22 (30")	462 (1749)	4"	2-5/8"**	50-3/16" (127.5 cm)	50-3/16" (127.5 cm)	15-1/4" (38.7 cm)	9-1/2" (24.1 cm)	21" (53.3 cm)	12" (25.4 cm)
BCM22X4/SBM22X4**	22 (40")	616 (2332)	4"	2-5/8"**	60-3/16" (152.9 cm)	50-3/16" (127.5 cm)	15-1/4" (38.7 cm)	9-1/2" (24.1 cm)	21" (53.3 cm)	12" (25.4 cm)

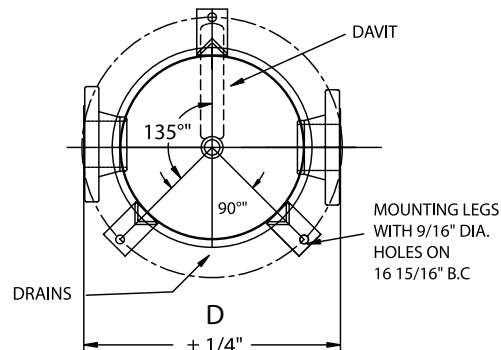
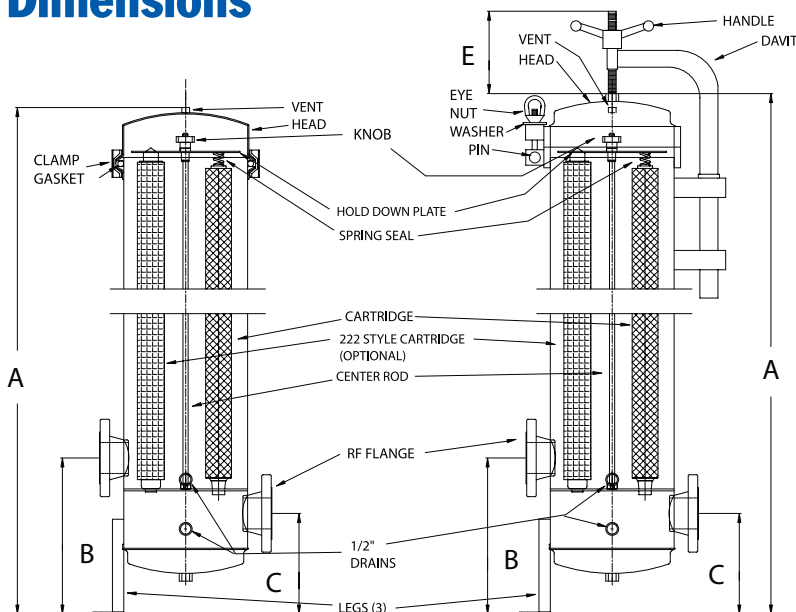
+ Housings will accept cartridge lengths: 10" = (9-3/4" or 10"), 20" = (19-1/2" or 20"), 30" = (29-1/4" or 30") and 40" = (39" or 40")

* Based upon 7 gpm per 10" length with a 25 micron wound cartridge at 2 PSID clean and viscosity of 1 cps. Flow rates are for guidelines only.

Actual flow rates are based on fluid, viscosity, cartridge type, micron ratings and other factors.

** When using 222 or 226 connectors, you must change to a 21FOS housing (21 round) for 2-3/4" OD cartridges.

Dimensions



Filter Cartridges Selection Guide
CLICK HERE

Ordering Guide (Example: BCM12X3-316L-226-2FC-PG-E)

BCM12X	3	-	316L	-	226	-	2	FC	-	PG	-	E
MODEL	CARTRIDGE LENGTH		MATERIAL /FINISH		CARTRIDGE CONFIGURATION		INLET/ OUTLET	CONNECTION TYPE		OPTIONS		GASKET
BCM12X = 12 cartridges BCM22X = 22 cartridges (V-Band Clamp Closure)	1 = 10", 9-7/8", 9-3/4"		Blank = 304L (Standard) 316L = 316L 304LC = 304L Coated 316LC = 316L Coated 304LEP = 304L Electropolished		Blank = DOE (Standard) 226 = 226 Fin/ Flat		3 = 3" (Standard) 4 = 4" 6 = 6" 8 = 8"	FL = Flange (Standard) MT = MNPT Male Thread FT = FNPT TC = Ferrules GF = Grooved Fittings		Blank = Mounting Legs, Gauge Ports (Standard) PG = Pressure Gauges (2) P = Passivate U = ASME Code "U" Stamp NS = Built to ASME Code/no Stamp HP = High Pressure (up to 250psi)		Blank = Buna N (Standard) E = EPR S = Silicone V = Viton T = Teflon Encapsulated Silicone
SBM12X = 12 cartridges SBM22X = 22 cartridges (Swing Bolt Closure)	2 = 20", 19-1/2" 30", 20-1/4" 4 = 40"		316LEP = 316L Electropolished 304LGB = 304L Glass Bead									



Get a quote on NeoLogic Filter Housings today:

Commercial Industrial Supply

1444 E. Main St., Rock Hill, SC 29730 USA

Tel: (866) 777-8001 Email: info@emailcis.com

QUESTIONS?

Ask one of our Service Representatives:
Mon-Fri 8a-8p, Sat 8:30a-4:30p EST

We ship six days a week!

