



## PMD Series Double Acting Pneumatic Actuators

FOR BALL VALVES UP TO 4"

### KEY FEATURES

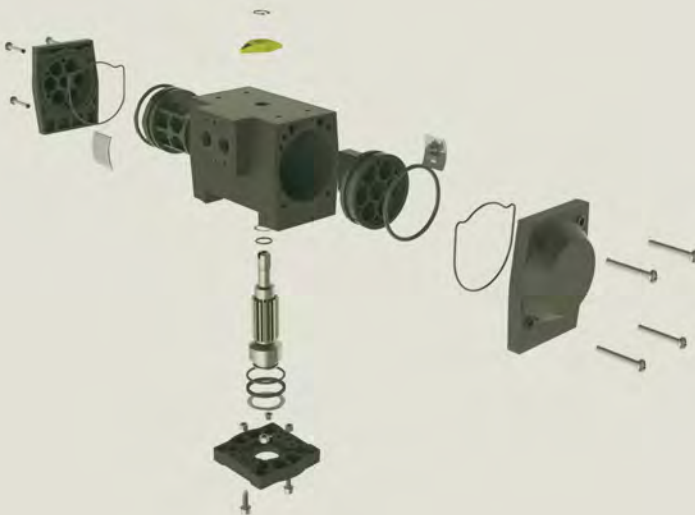
- Corrosion-Resistant Thermoplastic Housing
- Permanently Lubricated Gear Train
- Manual Override
- Two-Piston Rack and Pinion Design
- Namur-Style Mounting
- Position Indicator
- Lightweight
- ISO 5211 Mounting Base

### OPTIONS

- Double Acting Air-to-Open and Close
- Solenoid Valves with Optional Voltage
- Auxiliary Limit Switch
- Cycle Speed Controls

## TECHNICAL INFORMATION

### EXPLODED VIEW



### SPECIFICATIONS

HOUSING	Polyamide
OUTPUT SHAFT	Stainless Steel
MINIMUM AIR PRESSURE	80 PSI
MAXIMUM AIR PRESSURE	120 PSI
SEALS	Nitrile
CYCLE TIME	Half Second, Typical
AIR PORT CONNECTIONS	1/4" NPT



# PMD Series Double Acting Pneumatic Actuators

FOR BALL VALVES UP TO 4"

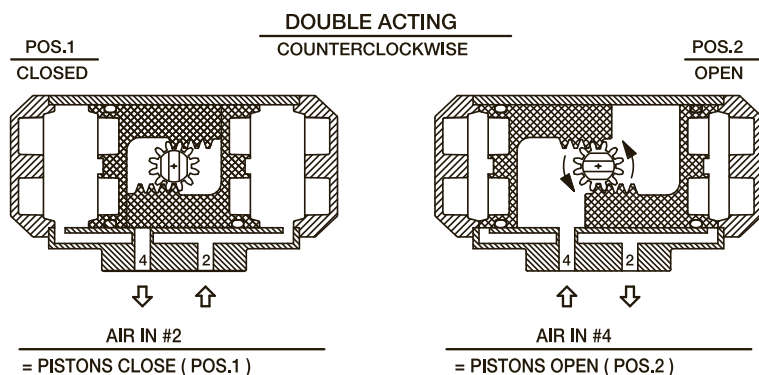
## TECHNICAL INFORMATION, CONTINUED

### DIMENSIONS

MODEL	øA in/mm	B in/mm	C in/mm	L in/mm	P in/mm	R in/mm
PMD10	.43/11 ISO F04	10-32 x .32 UNF-ISO F04	ø1.65/42 ISO F04	4.69/119	3.58/91	2.64/67

Dimensions are subject to change without notice – consult factory for installation information

### ACTUATOR OPERATING SYSTEMS



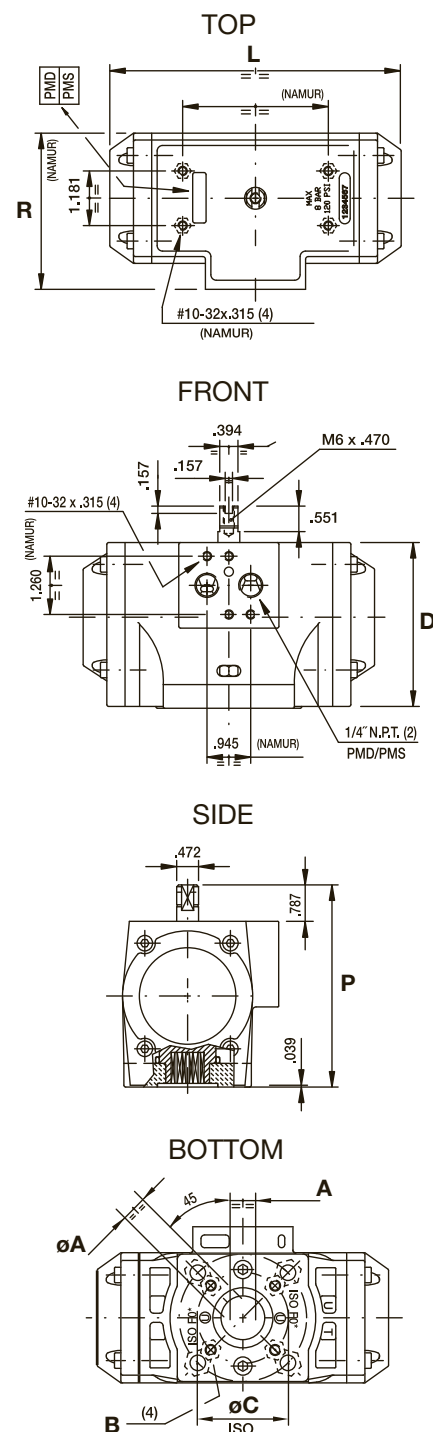
### ACTUATOR SPECIFICATIONS

MODEL	PMD10
Torque Output (in-lbs) @ 80 PSI	125
Enclosure Material	Polyamide
Output Shaft	Stainless Steel
Air Port Connections	1/4" NPT
Air Consumption (cu. in.)	13.5
Air Transfer	Internal
Stroke Time (seconds)	.5
Cycle Time	1/2 Second
Minimum Air Pressure	80 PSI
Maximum Air Pressure	120 PSI
Operation	Rack and Pinion
Weight (lbs/kg)	1.3/.6

### VALVE SELECTION CHART

SIZE* in/DN	TRUE UNION BALL VALVE	THREE-WAY BALL VALVE
1/4 – 4/8 – 100	PMD10	PMD10

\* Actuator selection based on clean water @ 70°F



**COMMERCIAL**  
INDUSTRIAL SUPPLY

For pricing and information please call  
Commercial Filtration Supply at (866) 777-8001

Visit us Online at: [www.commercial-industrial-supply.com](http://www.commercial-industrial-supply.com) for  
more high quality process equipment.