



PMS Series Spring Return Pneumatic Actuators

FOR BALL VALVES UP TO 4"

KEY FEATURES

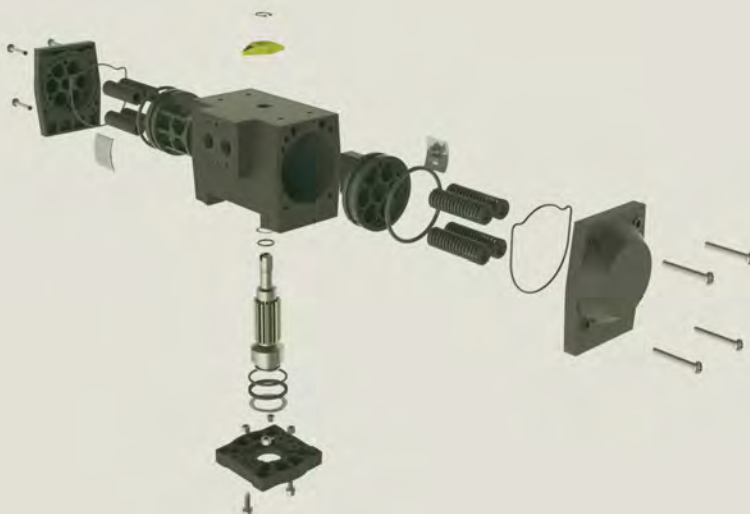
- Corrosion-Resistant Thermoplastic Housing
- Permanently Lubricated Gear Train
- Manual Override
- Two-Piston Rack and Pinion Design
- Namur-Style Mounting
- Position Indicator
- Lightweight
- ISO 5211 Mounting Base

OPTIONS

- Air to Spring Fail-Safe Operation
- Solenoid Valves with Optional Voltage
- Auxiliary Limit Switch
- Cycle Speed Controls

TECHNICAL INFORMATION

EXPLODED VIEW



SPECIFICATIONS

HOUSING	Polyamide
OUTPUT SHAFT	Stainless Steel
MINIMUM AIR PRESSURE	80 PSI
MAXIMUM AIR PRESSURE	120 PSI
SEALS	Nitrile
CYCLE TIME	Half Second, Typical

PMS Series Spring Return Pneumatic Actuators

FOR BALL VALVES UP TO 4"

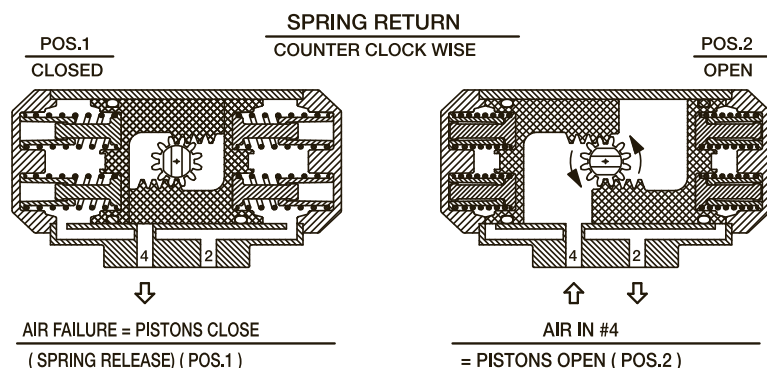
TECHNICAL INFORMATION, CONTINUED

DIMENSIONS

MODEL	øA in/mm	B in/mm	C in/mm	L in/mm	P in/mm	R in/mm
PMS15	.55/14 ISO F05	10-32 x .32 UNF-ISO F05	ø1.65/42 ISO F05	6.30/160	4.37/111	3.39/86

Dimensions are subject to change without notice – consult factory for installation information

ACTUATOR OPERATING SYSTEMS



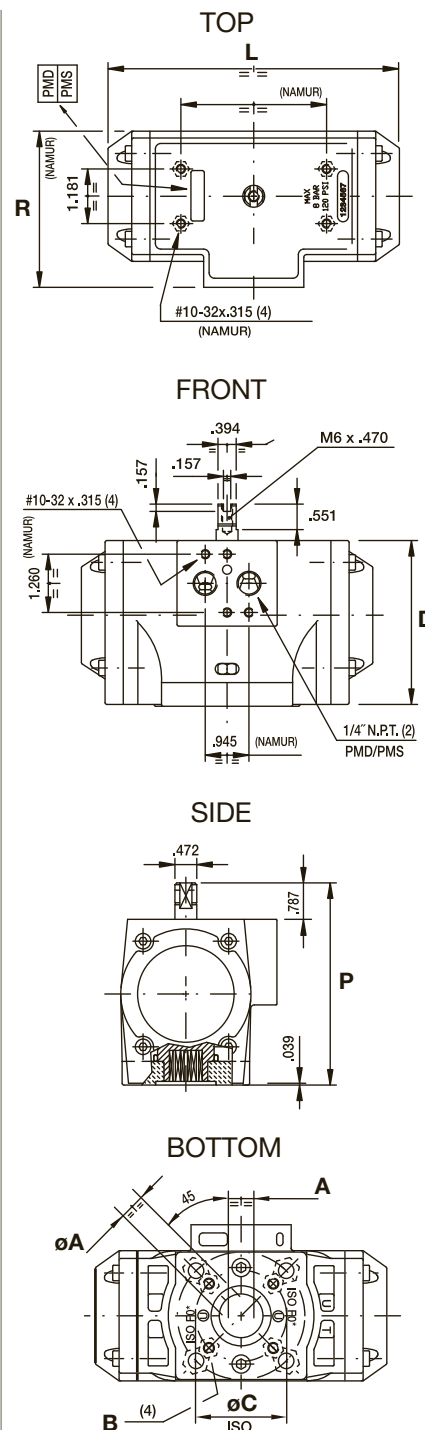
ACTUATOR SPECIFICATIONS

MODEL	PMS15
Torque Output (in-lbs) @ 80 PSI	107
Enclosure Material	Polyamide
Output Shaft	Stainless Steel
Air Port Connections	1/4" NPT
Air Consumption (cu. in.)	10.8
Air Transfer	Internal
Stroke Time (seconds)	.5
Cycle Time	1/2 Second
Minimum Air Pressure	80 PSI
Maximum Air Pressure	120 PSI
Operation	Rack and Pinion
Weight (lbs/kg)	3.1/1.4

VALVE SELECTION CHART

SIZE* in/DN	TRUE UNION BALL VALVE	THREE-WAY BALL VALVE
1/4 – 4/8 – 100	PMS15	PMS15

* Actuator selection based on clean water @ 70°F



COMMERCIAL
INDUSTRIAL SUPPLY

For pricing and information please call
Commercial Filtration Supply at (866) 777-8001

Visit us Online at: www.commercial-industrial-supply.com for
more high quality process equipment.